

Quick Guide to Swiss Pairs Scoring (BridgeTab & Scorer)

These instructions focus on Scorer and cover only the most common functions. For details on more advanced or optional functions see the Scorer User Manual.

More specific BOS instructions are on the laminated BOS sheet.

Hand out BridgeTabs prior to start.

Contents

1	Start from BOS & from BOS open Scorer	1
2	Set Up Event Details.....	1
3	Do the Draw and Start BridgeTab	2
4	BridgeTab Game Settings for Swiss Pairs.....	2
5	The Round is played.....	3
6	Generate Results, Print and Post to Web	3
7	Start New Round.....	3
8	Close Down	3

1 Start from BOS & from BOS open Scorer

1.1 When you click Start Scoring in BOS, Scorer will open for you to log-in:

Name: admin

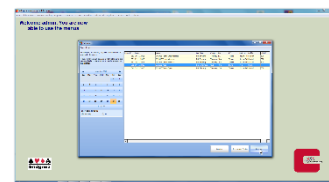
Password: blank

1.2 In the Scoring and Calendar tab, click Score/Ladder



If the event you want is not showing in the day's event list, refer to the Scorer User Manual for instructions on entering events.

1.3 Select the event you want (usually there will be only one) and click Next.



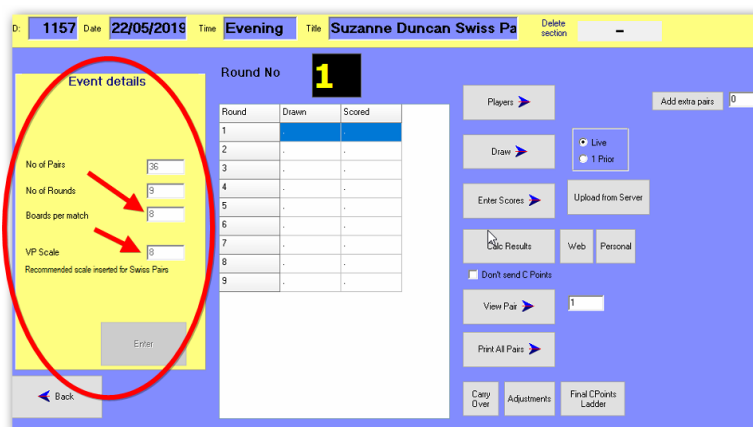
2 Set Up Event Details

2.1 It is usual to run 3 x 8-board rounds each evening with a tea break after the first round.

2.2 You must have an even number of pairs.

2.3 If Event Details have not been entered, you will need to enter these.

2.4 Click Players to see if Player names have been pre-entered. If they have, they will have been assigned a pair number. If extra pairs turn up (an even number of pairs), you can add these by clicking Add Extra Pairs.

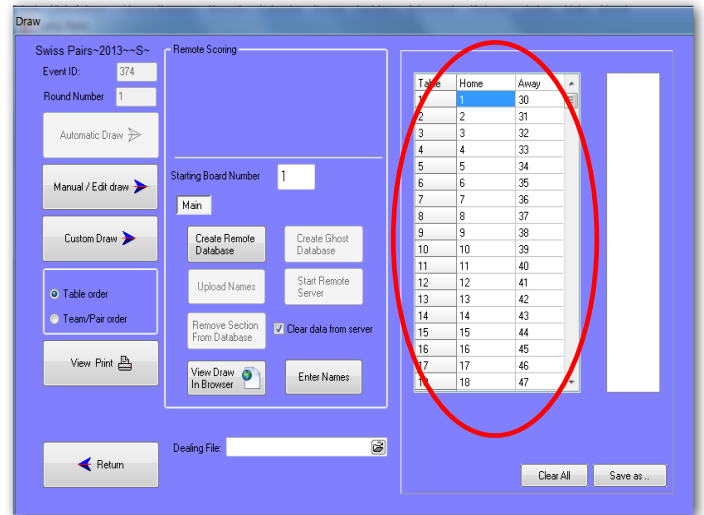


2.5 If names have been pre-entered, tell players if their number is less than or equal to then number of tables, to sit NS at that table. If their number is greater than the number of tables, they subtract the number of tables from their pair number and sit EW at that table.

- 2.6 If the names have not been pre-entered, for the first round, tell players to sit at any table. If they are NS, their pair number is the table number. If they are EW, their pair number is their table number + the total number of tables.
- 2.7 Enter the event details. Check that the VP scale is the same as Boards per Match. Click Enter.

3 Do the Draw and Start BridgeTab

- 3.1 Make sure the correct Round No. is showing.
- 3.2 Click Draw.
- 3.3 If the draw for Round 1 has not been done in advance, click Manual / Edit Draw and enter the draw as shown here.
- 3.4 For rounds other than Round 1, you will click Automatic Draw.
- 3.5 To print the draw (not necessary for round 1), click Team/Pair Order and then click View Print and print.

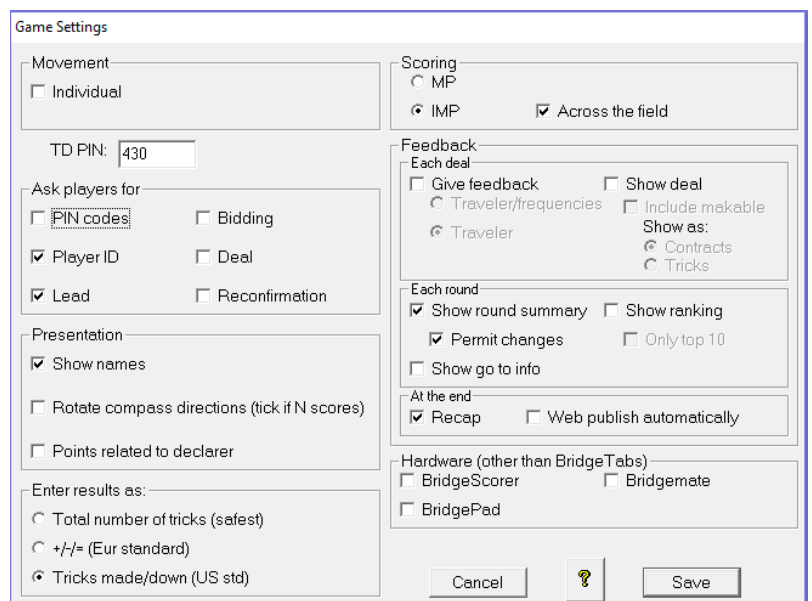


- 3.6 Click the folder icon on the right of the Dealing File window to attach the hand records. The file name for the night's deal is on the top of the printed hand records. You will need to attach this for each round.
- 3.7 Enter starting board number. 1 for the first round of the night.
- 3.8 Click Create Remote Database. Now click Start Remote Server to start BridgeTab. **Enter the BridgeTab Game Settings** (see picture below) and click the BOS big green START button.

Hand out the boards for Round 1. Players are already sitting at the tables they will play the round and so do not need to move.

4 BridgeTab Game Settings for Swiss Pairs

- 4.1 Do not use PIN codes, and do Permit Changes.
- 4.2 Click Save.



5 The Round is played

- 5.1 For 8 board matches you should allow 52 minutes for all results to be entered.
- 5.2 At the end of the round check in the BridgeTab window that all results have been captured (look for blank squares). If you are going to disallow entry due to late play, you don't have to do anything.
- 5.3 Click the red BOS button to stop the BridgeTab software from receiving any more results.

6 Generate Results, Print and Post to Web

Ask a suitable player to help you collect boards.

- 6.1 Make sure you are showing the correct round No.
- 6.2 Click Upload from Server to bring in the results.
- 6.3 Click Calc Results.
- 6.4 Click Web to post to Web.
- 6.5 Click Personal for Personal Score Sheets.
- 6.6 Ask a suitable player to help you collect boards.

The screenshot shows the BridgeTab software interface. At the top, it displays 'ID: 947', 'Date: 23/05/2018', 'Time: Evening', and 'Title: Suzanne Duncan Swiss Pa'. Below this, there's a 'Round No' section with a large '9' in a black box. To the left, 'Event details' includes input fields for 'No of Pairs' (56), 'No of Rounds' (3), 'Boards per match' (8), and 'VP Scale' (8). A central table shows round progress:

Round	Drawn	Scored
1	Y	Y
2	Y	Y
3	Y	Y
4	Y	Y
5	Y	Y
6	Y	Y
7	Y	Y
8	Y	Y
9	Y	Y

On the right, there are buttons for 'Players', 'Draw', 'Enter Scores', 'Upload from Server', 'Calc Results', 'Web', 'Personal', 'View Pair', and 'Print All Pairs'. A 'Back' button is at the bottom left.

7 Start New Round

- 7.1 Close all Scorer and BridgeTab windows.
- 7.2 Restart the next round by opening BOS and clicking Resume Event. Then Start Scoring to start Scorer.
- 7.3 Go back to the setup screen, make sure you are showing the correct round and produce the draw (click on the round line if it's not showing correct round). Enter the correct starting board number and restart BridgeTab (follow steps in Section 3). Post the new draw and results for the previous round. Hand out the next set of boards and then produce the datums for the previous round
- 7.4 When you enter the BridgeTab preferences for rounds after the first, you do not need to have players enter their Player ID, because Scorer knows who the players are.

Hand out boards

8 Close Down

- 8.1 Exit and close all BridgePad windows
- 8.2 Exit and close Scorer
- 8.3 Leave the PC on.